

TOP 5 INDUSTRIAL EXPANSIONS

CARGILL

\$225 MILLION
79,600 S.F.
12 NEW JOBS
325 JOBS
RETAINED

**SUNRISE
COOPERATIVE**
\$18 MILLION
11,000 S.F.

26 JOBS RETAINED

**ADVANCED
COMPOSITES**
6190 S.F.
PRODUCTION
LINE/
MEZZANINE
\$16 MILLION

**BOTKINS
SPEC. BUILDING
#2**

\$1.3 MILLION
30,000 S.F.

CUSTOM FOAM

\$1.2 MILLION
47,000 S.F.
ADDITION
50 JOBS
RETAINED

TOTAL INVESTMENT

\$267MILLION
207,258 S.F.
39 NEW JOBS
763 JOBS
RETAINED

ABOUT SSEP:

Sidney Shelby Economic Partnership (SSEP) is a not-for-profit organization composed of business, government and community leaders dedicated to the economic growth of Sidney and Shelby County communities.

SSEP works to improve the overall business climate in order to grow existing businesses, in addition to supporting business creation and new business attraction to the region.

Sidney-Shelby Economic Partnership
101 S. Ohio Ave., Floor 2
Sidney, OH 45365
www.choosesidneyshelby.com
info@choosesidneyshelby.com

The Sidney-Shelby Economic Partnership is a not-for-profit organization that depends solely on contributions from investors. THANK YOU to our investors for your continued support.



2019 SSEP ANNUAL REPORT



SIDNEY-SHELBY
ECONOMIC PARTNERSHIP



Photo by Bryant Billing, Sidney Daily News



PRESIDENT’S REPORT

2019 was a great year for the Sidney-Shelby Economic Partnership. The economy has been strong and the region experienced significant growth and investment. In fact, Shelby County landed the two largest industrial investment projects in the entire Dayton Region and a total of three of our projects ranked in the top 10. A total of 7 major industrial expansions were announced in 2019 and that placed us as number 15 on the Site Selection Micropolitan list.

SSEP has continued work on new economic and community development initiatives that resulted from an extensive visioning process that began in late 2018. We are executing new strategies that will enhance our community brand, improve downtowns, and improve the availability of housing. More than ever, our continued success requires private-public partnership and we are partnering on each and every one of these initiatives. Our primary focus continues to be maintaining an environment where companies can grow and prosper, but we also realize that economic development is also about building a sense of place for the people who live and work here.

I want to thank all the businesses and public entities who support the SSEP with finances, leadership and direction. Without all the support, Sidney and Shelby County would not be experiencing all this amazing success!

Martin L. Given
President of the Board of Trustees

2019 BOARD OF TRUSTEES

- Martin L. Given, President
Ferguson Construction Company
- Mike Lochar, Vice President
Lochar Inc.
- Dennis Sollmann, Secretary/Treasurer
Sollmann Electric Company
- Jeff Raible
Sidney-Shelby Co. Chamber of Commerce
- Julie Ehemann
Shelby County Commissioner
- Mark Cundiff
City of Sidney, City Manager
- Tony Schmitmeyer
Administrator, Fort Loramie
- Todd Weigandt
Area Energy & Electric, Inc.
- Kiera Sullivan
Continental Express, Inc.
- Mark Shappie
Administrator, Village of Russia
- Phil Gilardi
On-Point Concepts
- Doug Borchers
Superior Aluminum
- D. Jay Baird
Emerson
- Mike Homan
Administrator, Village of Anna

Mary Lee Smock
Lacal Equipment Inc.

TRUSTEE EMERITUS

Harry N. Faulkner

STAFF

James A. Hill, Executive Director
Betty Wehrman, Admin. Assistant

EXECUTIVE DIRECTOR’S REPORT

Cargill’s recent announcement to expand its integrated soybean crush and refined oils facility in Sidney, Ohio, marks the largest Shelby County industrial expansion project for 2019. The company will invest approximately \$225 million at the Sidney site, increasing crush capacity and modernizing operations. When completed, the Sidney facility will be the largest soybean crushing facility in North America. This massive investment will also benefit the local agricultural economy as farmers deliver crops directly to Cargill for processing.

While the Cargill expansion is great news for the Sidney-Shelby area, we also benefited from a year of strong industrial and commercial investment. Page 4 of this report highlights the top five industrial expansion projects for 2019. These major projects totaled more than \$267 million of investment, 207,258 s.f. of new construction, with 763 jobs retained and 39 new jobs created.

Sidney-Shelby County continues to be a leading county for industrial and business development. This annual report is jam-packed with infographics and data points that back up our strong position in the region, state and nation. But with the sustained growth comes challenges. You have go back to the 1970’s to see unemployment levels in the range of 3.4 to 3.5%. SSEP continues to work closely with the Workforce Partnership and HometownOpportunity.com to develop and attract the workforce necessary to sustain our business and industrial base.

SSEP is collaborating with the Chamber and Visitors Bureau to develop a branding/marketing strategy to better position Sidney-Shelby County for the future. Sidney Alive is spearheading a Downtown & Riverfront Development Strategy and we are partners in this important redevelopment effort. Building a stronger community with more amenities is often referred to as “Placemaking”. SSEP believes that Placemaking is an important element to attracting and retaining talent, so we are working to move this issue forward.

Our staff, board leadership and collaborative partners are dedicated to moving our community forward and we very much appreciate your continued support and participation.

Jim Hill, Executive Director

TOP 100 MICROPOLITAN

In 2016, 2017, 2018 and 2019 the Sidney area has been named to the prestigious Top 100 Micropolitan list by Site Selection Magazine. Sidney moved up to four spots from 19th to 15th in 2019.

"Projects have to be a new or expanded facility of at least 20,000 sq. ft., create at least 20 new jobs or require at least a \$1 million investment to qualify," said James Hill, executive director of the Sidney-Shelby Economic Partnership.

Site Selection Magazine’s award focuses on new corporate facility projects with significant impact, including headquarters, manufacturing plants, research & development operations and logistics sites, among others. It does not track retail and government projects, or schools and hospitals.

The Office of Management and Budget has identified 551 Micropolitans in the U.S. A micropolitan is defined as an area adjacent to a metropolitan city with (a city) of at least 10,000 but less than 50,000, plus adjacent territory.

LARGEST COMPANIES

HONDA
EMERSON
AIRSTREAM
PLASTIPAK
NK PARTS
WILSON HEALTH
NORCOLD
SIDNEY SCHOOLS
FRESHWAY
AMERICAN TRIM

LEADING THE WAY

5 OF THE
TOP 20
MANUFACTURING
COMPANIES
in the Region

THIRD
LARGEST
CONSTRUCTION
COMPANY
in the Region

LARGEST
ELECTRICAL
CONTRACTOR
in the Region

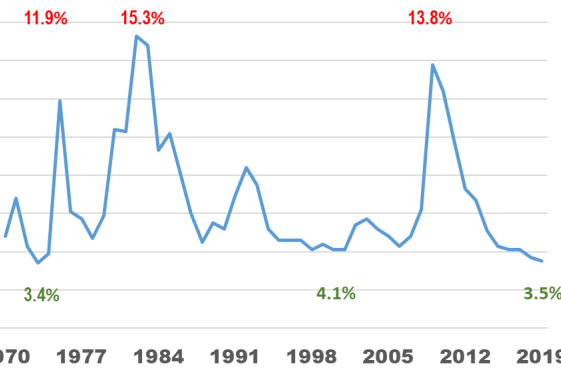
TOTAL
MANUFACTURING
SHIPMENTS
\$7.1 BILLION

TOTAL
WORKFORCE
28,011

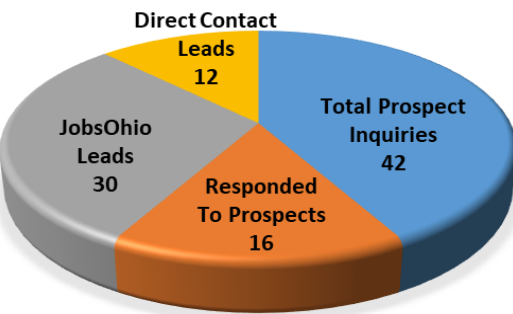
FOUR
of the top
TEN BEST
PERFORMING
SCHOOLS
in the Region

46.2%
EMPLOYED IN
MANUFACTURING
#1 IN OHIO

SHELBY COUNTY UNEMPLOYMENT RATE



BUILDING/SITE LEADS



CONSTRUCTION ACTIVITY IN \$MILLIONS

