

TOP 5 INDUSTRIAL EXPANSIONS

ADVANCED COMPOSITES \$10 MILLION 14 NEW JOBS 297 RETAINED	CARGILL CORP. \$4.95 MILLION 15 NEW JOBS 250 RETAINED	INDUSTRIAL RECYCLERS \$3.5 MILLION 32,000 S.F. 15 NEW JOBS 16 RETAINED
PLASTIPACK PACKAGING \$2.5 MILLION 59,862 S.F. WAREHOUSE EXPANSION	HEXA \$2.5 MILLION NEW EXTRUDER & PREMIX 10 NEW JOBS	TOTAL MAJOR PROJECT INVESTMENT \$25 MILLION 91,000 S.F. 118 NEW JOBS 1,777 JOBS RETAINED

ABOUT SSEP:
 Sidney Shelby Economic Partnership (SSEP) is a not-for-profit organization composed of business, government and community leaders dedicated to the economic growth of Sidney and Shelby County communities.
 SSEP works to improve the overall business climate in order to grow existing businesses, in addition to supporting business creation and new business attraction to the region.

Sidney-Shelby Economic Partnership
 101 S. Ohio Ave., Floor 2
 Sidney, OH 45365
www.choosesidneyshelby.com
info@choosesidneyshelby.com

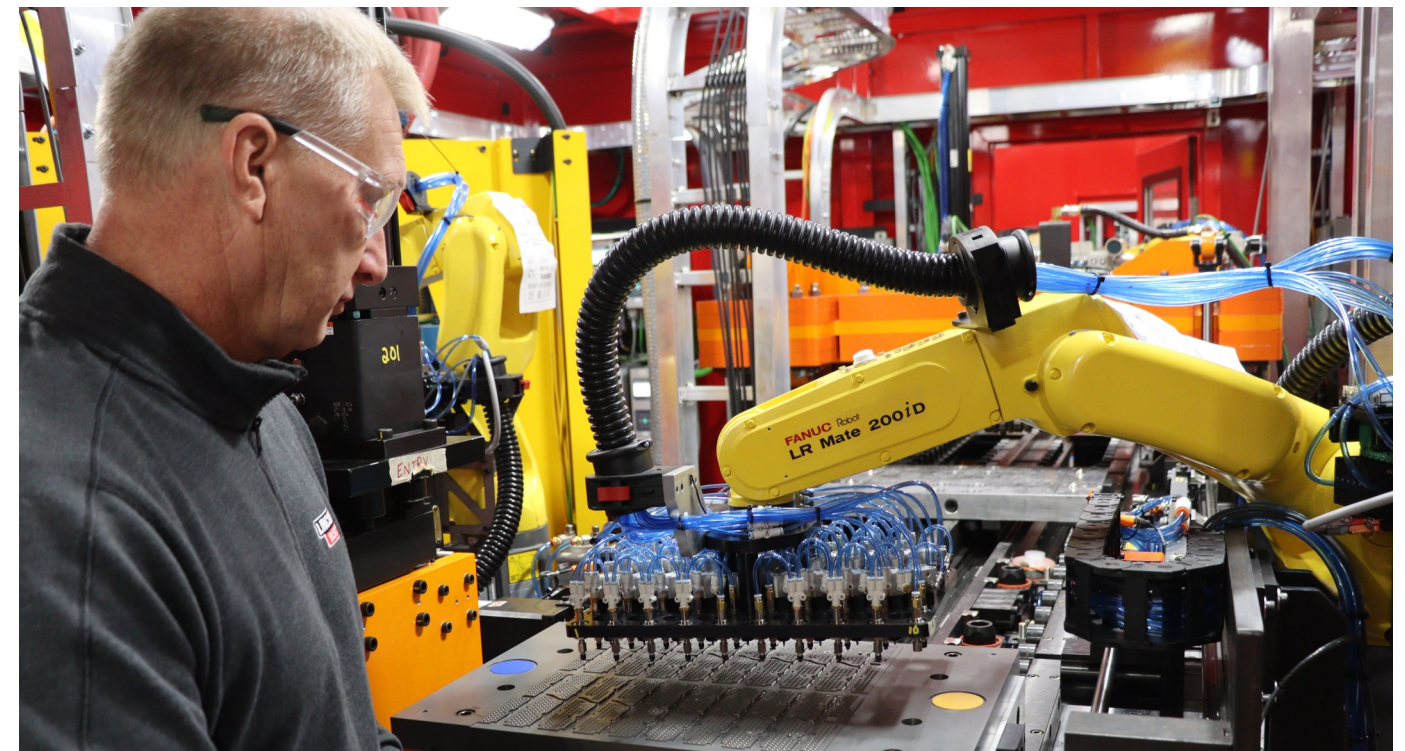
The Sidney-Shelby Economic Partnership is a not-for-profit organization that depends solely on contributions from investors. THANK YOU to our investors for your continued support.



SSEP 2020 ANNUAL REPORT

Economic Development - Talent Development - Placemaking

SIDNEY-SHELBY
ECONOMIC PARTNERSHIP



PRESIDENT'S REPORT

The word "LOCAL" is prominently displayed on the cover of our annual report this year because it was a year where SSEP was extremely focused on an expanded roll in local economic and community development. Much of this work came out of our visioning process that entered the implementation phase in 2020.

"SSEP is executing new strategies that will enhance our community brand, improve downtowns, and improve the overall availability of housing," said SSEP President Mick Given. This year's report is subtitled "Economic Development—Talent Development—Placemaking" because our strategic focus is to maintain an environment where companies and individuals can grow and prosper. SSEP's activities now encompass more than just "Traditional Economic Development". We are engaging in new private-public partnerships to enhance available housing, expand our local amenities and better market and brand our community.

I want to thank all the businesses and public entities who support the SSEP with finances, leadership and direction. Without all the support, Sidney and Shelby County would not be experiencing the incredible level of business investment.

Martin L. Given
President of the Board of Trustees

2020 BOARD OF TRUSTEES

Martin L. Given, President
Ferguson Construction Company

Mike Lochard, Vice President
Lochard Inc.

D. Jay Baird Secretary/Treasurer
Emerson

Jeff Raible
Sidney-Shelby Co. Chamber of Commerce

Julie Ehemann
Shelby County Commissioner

Mark Cundiff
City of Sidney, City Manager

Tony Schmitmeyer
Administrator, Fort Loramie

Todd Weigandt
Area Energy & Electric, Inc.

Kiera Sullivan
Continental Express, Inc.

Bruce Metz
Administrator, Village of Jackson Center

Phil Gilardi
On-Point Concepts

Mark Klosterman
Wilson Health

Nate Burns
Burns Heating & Cooling, LLC

Randy Purdy
Administrator, Village of Botkins

Mary Lee Smock
Lacal Equipment Inc.

TRUSTEE EMERITUS

Harry N. Faulkner

STAFF

James A. Hill, Executive Director
Betty Wehrman, Admin. Assistant

EXECUTIVE DIRECTOR'S REPORT

Even though 2020 was a year filled with unprecedented challenges, Shelby County business and industry have shown great resilience. Who would have dreamed that a global pandemic would temporarily shutter many of our businesses, moving the unemployment rate from 4.1 percent to more than 21.7 percent and then recovering back to 4.2 percent, all in about eight short months?

While industrial expansion investment dollars were lower than the previous years, the overall number of major projects increased in 2020. The year saw 10 industrial expansion projects ranging from \$1 million to \$10 million in size for a total of \$28 million in major project investment. Those projects created 118 new jobs and retained more than 2,000 jobs. Companies like Edgewell Personal Care in Sidney added additional production lines and personnel in order to ramp up production of their Wet Ones products.

Over the past 5 years (2016-2020), Shelby County has seen a significant amount of industrial investment. The 5-year capital investment numbers total \$1.079 billion with 57 major private investment projects, 1,361 new jobs and more than 10,000 jobs retained.

"2020 was indeed a challenging year, but hidden inside those challenges were business opportunities," said Jim Hill, SSEP Executive Director. "One good example is Airstream in Jackson Center. The pandemic changed the traveling landscape and created huge opportunities for Airstream to manufacture and sell more of their iconic Airstream travel trailers. Shelby County businesses have adapted, grown, pivoted and launched, all during a global pandemic. You have to admire the strength and tenacity of our businesses," added Hill.

Jim Hill, Executive Director

A YEAR OF PROGRESS

SSEP is proud to report the completion of several significant projects in 2020. Below are the highlights:

- Completion of the Downtown & Riverfront Development Strategy by CityVision Associates. SSEP was one of eight private and public organizations to fund and spearhead this important initiative.
- A new brand and marketing strategy was developed by the Visitors Bureau. Again, SSEP helped fund and support this priority effort. Check out the brand story [here](https://fb.watch/3Bd12SC4Xu/): <https://fb.watch/3Bd12SC4Xu/>
- Sidney-Shelby County awarded a total of \$140,684 in small business COVID relief to help with cost due to business interruption during the pandemic.
- The State Capital Budget awarded \$850,000 to fund the extension of the Canal Feeder Trail with plans to connect to the Greater Miami River Recreational Trail in the future.

LARGEST COMPANIES

HONDA
EMERSON
AIRSTREAM
PLASTIPAK
WILSON HEALTH
NK PARTS
WILSON HEALTH
AREA ELECTRIC
FRESHWAY
AMERICAN TRIM
SIDNEY SCHOOLS

LEADING THE WAY

\$1.079
BILLION
5-YEAR
CAPITAL
INVESTMENT

46.4%
EMPLOYED IN
MANUFACTURING
#1 IN OHIO

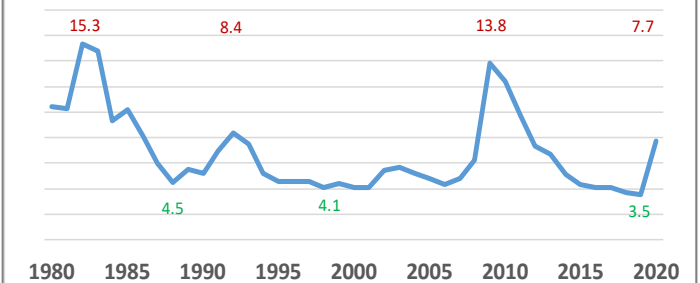
TOTAL
MANUFACTURING
SHIPMENTS
\$7.1 BILLION

6 of the
TOP 20
MANUFACTURING
COMPANIES
in the Region

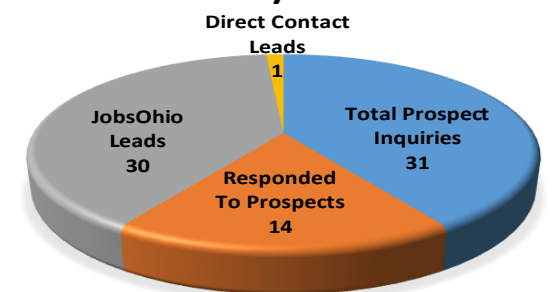
FOUR
of the top
Eight BEST
PERFORMING
SCHOOLS
in the Region

FOUR of
the **TOP**
MECHANICAL
ELECTRICAL
CONTRACTORS
in the Region

SHELBY COUNTY UNEMPLOYMENT RATE



BUILDING/SITE LEADS



CONSTRUCTION ACTIVITY IN \$MILLIONS

